



CASE STUDY

BALTIMORE, MD

Area Lighting

Baltimore, MD

Scope: Previous Probe Start MH System Retrofitted/Upgraded to Pulse Start MH with Wireless Control System

Distance of over one mile



Coverage of LeafNode Radio Frequency; Actual LeafNut software views

PROJECT DETAILS

- Outdoor area lighting at large (over one mile in length) automotive auction site
- Rough terrain with groves of tall trees separating multiple parking lots
- Extensive variation in natural lighting; some areas heavily shaded at same time that other areas encounter direct sunlight

LEAFNUT® BENEFITS

- Ability to program lights as groups for each separate parking lot and individuals for areas where sunlight or shade is most prevalent
- Significant energy savings achieved through dimming schedules tailored to variety of needs at single site

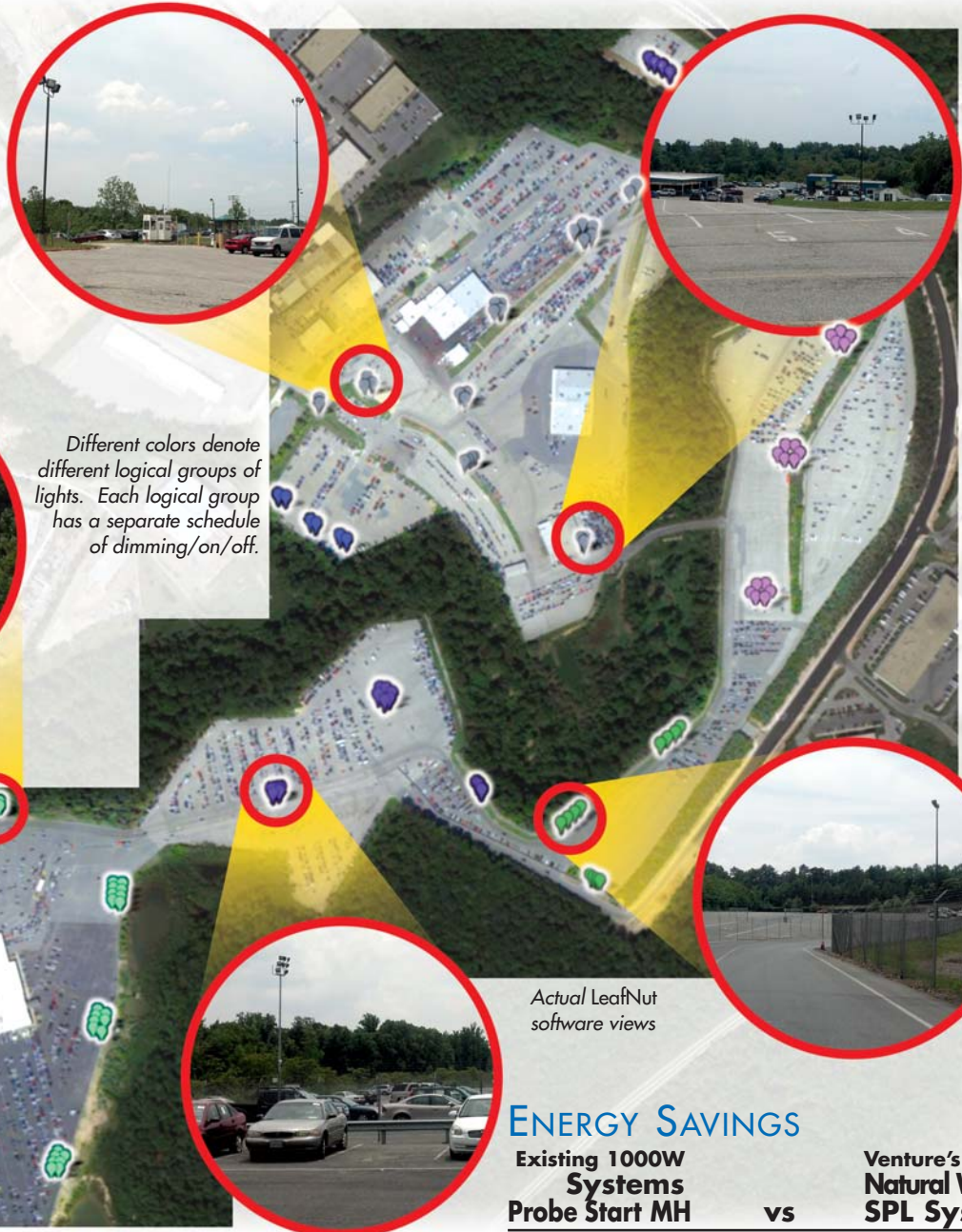


WIRELESS LIGHTING CONTROL SYSTEM

Continued on next page

PRODUCTS USED

- (1) BranchNode
- (138) LeafNodes
- (139) 575W Uni-Form® pulse start lamp/ballast systems



Different colors denote different logical groups of lights. Each logical group has a separate schedule of dimming/on/off.

Actual LeafNut software views

ENERGY SAVINGS

Existing 1000W Systems Probe Start MH	vs	Venture's 575W Natural White® SPL System
651,007	Annual kWh Energy Usage	275,271
0	Savings	375,736
\$65,101	Annual Energy Costs	\$27,527
0	Annual Savings <small>Based on \$0.10/kWh</small>	\$37,574 58% Reduction



WIRELESS LIGHTING CONTROL SYSTEM

(800) 451-2606
or (440) 248-3510

Fax: (800) 451-2605
7905 Cochran Road
Glenwillow, Ohio 44139 USA
E-mail: venture@adlt.com

VentureLighting.com



VENTURE
LIGHTING